



# The Covenanter

APRIL 2020

Oh, how quickly the world can turn upside down. Do you remember what you were doing a month ago? I do. One month ago I was sitting around a table participating in a session meeting. One month ago, my father had just flown into town for a weekend of fun at Disney World. I remember each morning when I packed our Disney bag I threw a small bottle of hand sanitizer into it and told my father sternly we had to keep our hands clean because there was a virus going around. One month ago I never would have imagined this is where we would be today.

I never could have foreseen that the grocery stores would look like something out of a post-apocalypse movie. I never would have anticipated I'd be watching two, sometimes three, press conferences a day; watching numbers rise, feeling the weight of the falling economy. One month ago the worst thing I saw on the horizon was March 15th, the time change. I came to church that morning and joked with a few of the 8:15 members about how it was the worst Sunday of the year for us Night Owls. And then I left the church that afternoon, not knowing that would be the last church service we'd have for the rest of the month, not knowing it would be the last time I might see some people for a while. It's enough to bring a tear to your eye.

And yet...

Here I sit, one month later feeling oddly strong, feeling still supported and loved. Here I sit with hope in my heart and a smile on my face. Life is full of change. Change that we have to make and are excited about and change that we have no control over and scares us. Change often brings with it a sense of isolation. Everyone goes through peaks and valleys in their own time and it brings with it a feeling that we are struggling alone. "You don't know how I feel!" we tell our friends. "You have no idea what I'm going through!" But this change...this change is unlike anything we've every experienced before. This change is different because it's not just one of us going through it, but all of us!

In these past few weeks I've been overwhelmed by those who have stepped up to the plate and realized this is not something for anyone to go through alone. Our isolation is not merely mental this time around, but physical, and I am astounded by those who are actively calling members, checking in with those who are homebound, writing letters and sending cards to those who need an uplifting word. I am in awe of our worship team and our A/V people, at their dedication to asking the question "how can we worship God from where we are" and then seeking out the answer in only a matter of days! I'm honored every time I hear someone has watched the recorded service and said they felt a little closer to God, closer to the church, through the experience.

Let us not lose faith, sisters and brothers. Life is unpredictable and ever-changing. But we are a community called together by a God who is never changing, who resides with us, who encourages us to be the body of Christ even if we may be apart. Keep up the good work! Keep fighting the fight! Keep sending cards and letters, keep making phone calls, keep leading in love so that during this time no one ever feels they are alone! All things come to an end and so too shall this. Let us live so that when our isolation comes to an end and we see each other in our church building once more we can run to one another and embrace in joy, but feel as though no time has passed at all.

*Emily*

*“I am the  
resurrection  
and the life.”*

JOHN 11:25



## A NOTE FROM PASTOR Emily



### Updates From Session...

In light of Orange County's "stay-at home" order the session has made the decision to cancel in person services and continue to do "virtual services". A service will be recorded every Saturday morning by Pastor Bob, Pastor Emily, Penny Walsh, and Justin Chase. A link will be sent to you every Sunday morning so that we can continue to worship together, even though we must be separated during this time. Your worship team is also actively working to bring you a Maundy Thursday service via the internet and is excited about the possibilities this affords us.

For safety reasons the Easter Egg Hunt, Parent's Night Out, and other church activities are cancelled through April 9th to comply with the stay-at-home order. But this doesn't mean that business as usual has ceased at the church. Session, committees, and staff continue to work from home via online zoom meetings and phone calls, actively anticipating the day we will be able to come together again.

Though we may be separated at this time, it is important that we continue to remember that it is not four walls that make us the Church. Please make every effort to look after one another in this time. This is a perfect opportunity to make phone calls, write letters, and send care packages to one another. It is important that no one feels alone or left behind. Do your part, check in with one another, and continue to hold everyone in your prayers as we explore a new reality we have not faced before.

## ON-LINE GIVING



WPPC continues to need your kind and generous financial support. As we are sure you are aware, even though we are not able to hold Sunday services the church's expenses continue. Gifts may be made by mail or on the church's website – [www.winppc.org/give](http://www.winppc.org/give). As always, we are extremely grateful for your support that upholds the entire life of the church.

## PEN PAL PROJECT

### PEN PAL PROJECT



What the world needs now is love sweet love...and indoor activities that we can do with minimal contact. The art of letter writing is centuries old, but lately, in this new era of technology, it is becoming an art that is lost. During this time when we are stuck in our houses desperately searching for something to do, let's practice this art of letter writing by flooding one another with letters! If you would like to participate in this pen pal project please e-mail Emily Wasser at [emilyw@winppc.org](mailto:emilyw@winppc.org). Please let us know if you have a preferred gender, if you'd prefer to write letters or cards, and confirm your home address. We'll pair you up with another member to "pen pal" with until we can all be together again or for as long as you wish!

*We always thank  
GOD for all of you  
and continually  
mention you in  
our prayers.*



---



---

## DEACON'S DEN

---



---

The law of entropy states that all orderly systems eventually decay, dissipate, and descend into chaos. Stars gather mass, ignite, burn brightly, then fade, shrink and possibly explode. Organic life burgeons, falters, dies. Dust unto dust.

The good news is that stardust from exploding novae gather into nebulae, nebulae form stars, and the heavens shine with new lights. Plants and animals leave behind seeds and offspring to continue the onward push of life. The husks of ancient ancestors become living tissue once again.

Our personal lives often follow the cycle of birth, maturation, death and rebirth. Knowledge and work experience accumulate, a career thrives then falters. Work life ends in retirement but is replaced by new interests, second careers, travel and learning. Life begins anew at 70.

Easter is a time of celebration. Jesus suffered and died but rose again. He completed the cycle of his ministry in order to blaze a bright path for us all. Even as our daily rounds lift us up and push us down, we have the comfort of knowing that life in Christ leads to ever more abundance. To quote St. Francis, "*In dying to self (living more and more in Christ's presence) we are born to eternal life.*"

---



---

## Fellowship Opportunities

---



---

### **Friendship Club**

The Friendship Club is taking a break and will meet again in October.

### **Book Club:**

The Winter Park Presbyterian Church Book Club (aka The Abibliophobes [those that are afraid of running out of reading material]) generally meets on the first Monday of each month at 7:00 PM in Room 303 of the church. They will not meet in April but will resume in May. The books, which include a wide variety of new fiction, classics, and non-fiction, are selected by the participants for several months in advance. May 4th: *Brideshead Revisited* by Evelyn Waugh; June 1st: *Never Have Your Dog Stuffed* by Alan Alda; July 6th: *The Dutch House* by Ann Patchett. Newcomers are welcome at any time to enjoy the discussion and to experience the fellowship. For more information, please contact Marilyn Bryant—[mjbryant1957@gmail.com](mailto:mjbryant1957@gmail.com).

### **Hannah Circle**

The Hannah Circle meets monthly on the second Monday at 7:00 PM in room 301. Our next meeting is scheduled for April 13 but is subject to the church being open.

### **Elizabeth Bible Study**

The Elizabeth Study Group meets on the second Tuesday of the month at 10:00 AM in the Parlor. Our next meeting is scheduled for April 14th but is subject to the church being open.

### **Ladies Game Night**

All Winter Park Presbyterian Church women are invited to join us at our monthly game night. We usually play Hand and Foot and Bridge, but feel free to come and introduce your favorite game. We typically meet the 3rd Monday of each month, at 7:00 PM. Better yet, come at 6:00 PM and build a salad. One lady brings greens and everyone else brings a cup of something to go into the salad such as onions, beets, chopped eggs, beans, corn, cheese, or anything of your choosing. Bring your own drink and favorite salad dressing and, if you would like, a snack/munchie for later. Come alone or bring a friend! Our next Game Night is scheduled for April 16th but is subject to the church being open. For more information call Carla Gehrig at 407-678-8396.

## ONE GREAT HOUR OF SHARING - APRIL 12TH

During Lent, as we intentionally focus on aligning our lives with God's calling for us, One Great Hour of Sharing provides an opportunity to become, as Isaiah proclaims, repairers of the breach. For over 70 years, Presbyterians have joined together in this ecumenical effort to share God's love with others less fortunate than we. OGHS is the single, largest way that Presbyterians come together every year to work for a better world and sharing God's love with all of our neighbors-in-need.

Three programs benefit from your gifts to OGHS to partner with others to show that through Christ's love all things are possible (Presbyterian Disaster Assistance receives 32% to work alongside communities as they recover and find hope after natural or human-caused disasters; Presbyterian Hunger Program receives 36% to support initiatives that create sustainable food systems and alleviate root causes of poverty that all may be fed; and Self-Development of People receives 32% to provide resources and education to oppressed and disadvantaged communities working to overcome poverty and injustice through initiatives they own and receive direct benefits).

Since 1949, this offering has been an ecumenical effort. While each denomination allocates its gifts differently, all use their funds for ministries of disaster relief, refugee assistance and development aid. Today, projects supported by OGHS are underway in more than 100 countries, including the United States and Canada.

Please prayerfully consider your gift for this special offering. Thank you.

~The Compassion Committee

## 2 CENTS A MEAL - APRIL 26TH

Sunday, April 26, 2020, is the second quarterly collection date for 2 Cents A Meal this year. Please continue your support for P.A.T.H. (Presbyterian Answer to Hunger). Your contributions support the Second Harvest Food Bank, which distributes meals to partner feeding programs across our six-county area; Society of St. Andrew (SOSA), which coordinates gleaning events with volunteers to provide fresh, nutritious produce to local food banks; Alliance for International Reforestation (AIR) in Guatemala, which plants trees to provide fruit and prevent mudslides, as well as building and installing fuel-efficient brick stoves in remote poverty-stricken villages, and Madagascar Project (Dan and Elizabeth Turk, PC [USA] missionaries), which allows Dan to train seminary students in the planting and cultivation of fruit trees, and helps Elizabeth implement a community health program, teach AIDS awareness and advise the family planning program.

Your contributions in the past have helped our partners combat hunger in many ways and in many places. Thank you for your continued support.

~ The Compassion Committee

The church office is accepting checks for all offerings.  
 You can also donate on online at [winppc.org/giving](http://winppc.org/giving).  
 Be sure to note which offering you are contributing to.

## Cuba Trip

Pat Morgan, Mary and Jay Van Hook celebrated our two years of partnership with our sister church Santa Clara Presbyterian Church. A group of 14 from the Central Florida Presbytery came to visit fellow Presbyterian Churches in the Central Presbytery of Cuba. The recent US requirement that all flights to Cuba must land in Havana (a good 4 hour trip from Santa Clara) complicated the trip. We were met in Havana by Pastor Reile of Santa Clara and the expert driver for the Presbytery. The entire group slept at Santa Clara the first night and then the eleven left to stay at their three churches. Session members and others greeted us warmly. We gave the suitcase containing over the counter medications, along with others with craft supplies and fabrics. We arrived in Cuba for Valentine's Day—"a day of love and friendship" that is celebrated by all ages in Cuba. We spent the first morning with the senior group that was celebrating Valentine's day with a poetry challenge. After an appreciated siesta we had dinner with the pastor and his wife in the recently remodeled kitchen and dining room (as we did many times).

Saturday we visited the home of one of the members in the church in the country that typically meets at the Presbyterian camp. After lunch members came in their horse drawn carts to join us for a service. Many of these have been members at least 20 years. We learned of an important church mission-- our hostess prepares meals for 150 low income elderly individuals in the area and distributes them on a monthly basis. Sunday we participated in a well attended adult Christian Education class-taught in English and Spanish by Jorge Romirez for our benefit. During the church service we received a beautiful cross to commemorate our two year partnership. The church hosted a congregational reception to celebrate this occasion. During the afternoon we attended a beautiful vocal concert of Cuban music at a lovely Cultural Center.

Monday was a special day for the senior group—a program consisting of a farce folk comedy by an excellent group of actors and a concert by a professional quality choir led by Yolanda Martinez (member of session and a highly regarded choir director). WPPC also brought her music from our choir. We met with the session to evaluate our partnership. Santa Clara expressed appreciation for how our contributions help meet their transportation needs. We learned that they have used the sewing machine to make clothes for children hospitalized for cancer. During our visit we also saw that the church hosts an Alcoholics Anonymous group three evenings a week.

Tuesday the pastor's wife took us on a tour of the shopping area and the beautiful central square before joining the others from the US and Cuba for a joint Bible Study and fellowship time at a scenic resort. We then make the long journey back to Havana before flying back. We were struck by the contrasts in Havana—beautiful buildings next to those that were literally falling apart.

We left appreciating the welcome we received, the challenges facing our Cuban friends, and the spirit of compassion reflected in the Santa Clara Church. With the severe shortage of pastors in Cuba (Reile has 2 churches and helps supply a third). Santa Clara is blessed to have this effective ministry couple. We encourage others to consider the opportunity to meet with our Cuban partners in Christ.

**Check out some of the Cuba pictures on the next page!**



# Cuba Trip PICTURES



# ?? Bible Quiz ??

Three of the Gospels tell that when Jesus was crucified, darkness covered the earth from noon until three in the afternoon. Which Gospel does not mention this event?

- A. Matthew
- B. Mark
- C. Luke
- D. John



Answer: D (See Matthew 27, Mark 15, Luke 23, and John 19.)





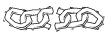





# PUZZLE

## Picturing the Lord's Supper

Jesus ate the Passover meal with his disciples as a symbol of the new covenant.



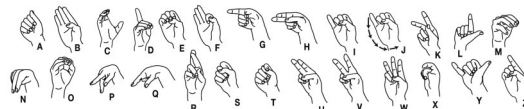
Directions: Use the picture clues to fill in key words from Luke 22:19-20, NIV.

And he took , gave  and  it, and gave it to them, saying, "This is my  given for you; do this in  of me." In the same way, after the supper he took the cup, saying, "This  is the new  in my blood, which is  out for you."

LUKE 22:19-20, NIV

# Puzzle!

Hands play a key role in the biblical accounts of Jesus' crucifixion and resurrection. Use this sign-language alphabet to retell what happened.



Jesus' \_\_\_\_\_ were \_\_\_\_\_  
to the tree. Two criminals were also crucified,  
one on the \_\_\_\_\_  
and the other on the \_\_\_\_\_ of Jesus. Jesus  
cried out with a loud voice, " \_\_\_\_\_ ,  
into your \_\_\_\_\_ I commit my spirit."  
(Luke 23:46) Jesus' friends \_\_\_\_\_  
him from the cross to the tomb. Jesus showed  
\_\_\_\_\_ his \_\_\_\_\_ to prove  
he was Christ. Bring your \_\_\_\_\_ together  
in \_\_\_\_\_ , and thank God for his  
Son, Jesus!

Answer: hands, nailed, right, hand, left, Father, hands, carried, Thomas, hands, hands, prayer, poured





Sun	Mon	Tue	Wed	Thu	Fri	Sat
			<b>1</b> <i>Sara Spivey</i>	<b>2</b> <i>Will Lawrence</i> <i>Pat Pulliam</i>	<b>3</b> <i>Doug Reece</i> <i>Ryan Wilson</i>	<b>4</b>
<b>5</b> <i>Thomas Skelton</i>	<b>6</b> <i>Sarah Johnson</i> <i>Ryleigh Ranson</i>	<b>7</b> <i>Shay Ranson</i>	<b>8</b>	<b>9</b> <i>Matt Groeteke</i> <i>Betty Johnston</i> <i>Tatiana Lampe</i>	<b>10</b>	<b>11</b>
<b>12</b>	<b>13</b>	<b>14</b>	<b>15</b> <i>Harry Oldford</i>	<b>16</b> <i>Ayden Blood</i>	<b>17</b> <i>Lisa Dreasher</i>	<b>18</b>
<b>19</b> <i>Brad Erb</i> <i>Tom Thompson</i>	<b>20</b>	<b>21</b> <i>Maurice Pulliam</i> <i>Nelson Roe</i>	<b>22</b> <i>Eric Johnson</i>	<b>23</b> <i>Jackie Groeteke</i> <i>Cameron White</i>	<b>24</b> <i>Allie Evans</i> <i>Lynn Youtz</i>	<b>25</b>
<b>26</b>	<b>27</b> <i>Anne Murray</i>	<b>28</b> <i>Ardyth Austin</i> <i>Phyllis Woods</i>	<b>29</b> <i>Adeline Walker</i>	<b>30</b> <i>Caroline James</i> <i>Touckay McCurdy</i>		



The Rev. Dr. Robert Eckard, Interim Pastor  
 The Rev. Emily Wasser, Associate Pastor  
 Carolyn Achenbach, Director of Operations/Accountant  
 Cindy Mitchum, Executive Assistant  
 Barbara Hordern, Administrative Assistant  
 Justin Chase, Director of Music  
 Penny Walsh, Organist  
 Tricia Wilson, Director of Preschool Programs  
 Susan Davis, Director of Handbells & Children's Music  
 Kenny Lovelace, Sexton

### SESSION

#### 2020

Doris Anguish  
 Marilyn Bryant  
 Rick Davis  
 Steve House  
 Larry Seel  
 Bob White

#### 2021

Phillip Anderson  
 Lisa Dreasher  
 Jayne Leach  
 Shaheed Mohammed  
 Peter Rice  
 Nelson Roe

#### 2022

Theresa Coker  
 Bonnie Gaughan  
 Fran Morrissey  
 Sean Tallungan  
 Michelle Trahan  
 Jay Van Hook

### DIACONATE

#### 2020

Ardyth Austin  
 Cathy House  
 Caroline James  
 Jim McKinney  
 Dennis Schmalstig  
 Matt Straub

#### 2021

Mike Galyean  
 Reta Jackson  
 Julie Kent  
 Curtis Koon  
 Sara Van Arsdel  
 Jeanne Vinci

#### 2022

Susan Davis  
 Jane Munns  
 Rachel Myers  
 Christine Rich  
 Meg Ball Thomas

### MISSIONARIES

Rev. Gordon and Dorothy Gartrell - Brazil  
 Jenny Bent - Dominican Republic  
 Mark Hare - Haiti  
 Dr. Dan & Elizabeth Turk - Madagascar

For Covenanter or Sunday bulletin submissions, please fill out a publicity request online at <http://winppc.org/publicity-request/> or contact Cindy Mitchum at [cindym@winppc.org](mailto:cindym@winppc.org) or 407-647-1467.