



# The Covenanter

FEBRUARY 2019

## To Clap, or Not to Clap . . .

There are many weighty and important matters that have demanded the attention and vigorous debate of theologians and church leaders over the many centuries of the Christian era. Some of these have led to great divisions and sadly, all too often, even violence. We human beings do not do well with differences of opinion particularly when they involve religious matters. Therefore, one should not tread into areas of deep controversy without careful, thoughtful, and serious reflection. With that in mind, and with great humility, I now turn to address that vital, burning question that is on everyone's mind today (or, perhaps more likely not on anyone's mind): "Under what circumstances, if any, is it appropriate to clap in church?"

Not too long ago applause during a worship service under any circumstances was something that was considered absolutely forbidden. The reasoning has been, and rightfully so, that when a choir or soloist sings during the service of worship it is not considered to be a performance, but an offering to God.

That being said, it is also true that at times we are so deeply moved by something we experience in worship that we feel a need to respond with affirmation. We want to add our praise to that which has been expressed. In my opinion, when it is a spontaneous expression or celebration of our praise, thanksgiving, or love applause is also an act of worship and therefore appropriate. The obvious exception is when the particular piece has ended with a tone of quiet reverence. Applause at that moment would shatter the congregation's ability to prayerfully reflect on what they have heard.

Therefore, let the Spirit lead you! If something inside is telling you to make a joyful noise to the Lord then go for it. But, if you are doing it simply because it is routine to clap after someone sings it is probably best to give a silent prayer of thanksgiving instead. In any event, just remember when it comes to the question of whether or not to clap in church, I think God would want us to devote our attention to weightier matters.

God bless you!


Bob

**February 3rd**



Every year, on the Sunday of the Super Bowl, churches across America take a moment to bring awareness to hunger and raise soup and other canned items to help local organizations feed the hungry. Last year, we set a goal of 600 cans and managed to raise 607! This year our children have set an unprecedented goal of 800 cans! Cans of anything! Soup, Veggies, Beans, even cans of Tuna count! Mark your calendars for February 3rd and be sure to raid the cabinets, snap up those cans, run with them to the church, and help us make a touchdown against hunger in Winter Park!

 <b>ANNUAL CONGREGATIONAL MEETING</b> <b>FEBRUARY 10TH</b> <b>IMMEDIATELY FOLLOWING THE 10:30 AM SERVICE</b>					FRIDAY 1	SATURDAY 2
					<b>Friendship Club</b> 11:30am, FH <b>Tai Chi</b> 11:30am, CE Bldg. <b>Parent's Night Out</b> 5:30pm, FH	<b>AGO Festival</b> 2pm, Sanctuary
SUNDAY 3	MONDAY 4	TUESDAY 5	WEDNESDAY 6	THURSDAY 7	FRIDAY 8	SATURDAY 9
<b>Communion</b> <b>Worship Service</b> 8:15am-Chapel 10:30am-Sanctuary <b>Sunday School</b> 9:15-10:15am <b>Library Open</b> 9:30am-Noon	<b>Library Open</b> 9am-Noon <b>Tai Chi</b> 11:30am, FH <b>Book Club</b> 7pm, Rm 303	<b>Staff Meeting</b> 10:30am, Rm 301 <b>TNT</b> Class: 4:30 pm Dinner: 5:30 pm Classes: 6:30 pm <b>Children's Choir/            Youth Ensemble</b> 6:30 pm, Rm 102	<b>Worship Mtg.</b> 4pm, Rm 303 <b>WM Ringers</b> 6pm, Rm 102	<b>Library Open</b> 9am-Noon <b>Caregiver Support</b> 10am, Rm 301		
SUNDAY 10	MONDAY 11	TUESDAY 12	WEDNESDAY 13	THURSDAY 14	FRIDAY 15	SATURDAY 16
<b>Worship Svc.</b> 8:15am-Chapel 10:30 am-Sanctuary <b>Sunday School</b> 9:15-10:15am <b>Library Open</b> 9:30am-Noon <b>Annual Cong. Mtg.</b> 11:30am, Sanctuary <b>WPPC Ringers</b> 11:35am, Sanctuary <b>Youth Group</b> 5:30pm, Room 204	<b>Library Open</b> 9am-Noon <b>Tai Chi</b> 11:30am, FH <b>Hannah Circle</b> 7pm, Rm 301	<b>Elizabeth Bible Study</b> 10-11:30am, Parlor <b>Staff Meeting</b> 10:30am, Rm 301 <b>TNT</b> Class: 4:30 pm Dinner: 5:30 pm Classes: 6:30 pm <b>Children's Choir/            Youth Ensemble</b> 6:30 pm, Rm 102	<b>Preschool Board</b> 10am, Rm 301 <b>Worship Mtg.</b> 4pm, Rm 303 <b>WM Ringers</b> 6pm, Rm 102 <b>Chancel Choir</b> 7:15pm, Sanctuary	<b>Library Open</b> 9am-Noon <b>Communion at            Westminster WP</b> 11am <b>Committee Night</b> 6:30pm Chairs 7pm Prayer Svc 7:30pm Meetings	<b>Tai Chi</b> 11:30am, FH <b>Youth Lock-In</b> 5pm	<b>Youth Lock-In</b> Ends 10:30am
SUNDAY 17	MONDAY 18	TUESDAY 19	WEDNESDAY 20	THURSDAY 21	FRIDAY 22	SATURDAY 23
<b>Worship Svc.</b> 8:15am-Chapel 10:30 am-Sanctuary <b>Sunday School</b> 9:15-10:15am <b>Library Open</b> 9:30am-Noon <b>WPPC Ringers</b> 11:35am, Sanctuary	 <b>Office Closed</b> <b>Tai Chi</b> 11:30am, FH <b>Ladies' Game Night</b> 6pm-Dinner 7pm-Games, Rm 317	<b>Staff Meeting</b> 10:30am, Rm 301 <b>TNT</b> Class: 4:30 pm Dinner: 5:30 pm Classes: 6:30 pm <b>Children's Choir/            Youth Ensemble</b> 6:30 pm, Rm 102	<b>Coalition            Food Prep</b> 9am/Kitchen <b>Worship Mtg.</b> 4pm, Rm 303 <b>WM Ringers</b> 6pm, Rm 102 <b>Chancel Choir</b> 7:15pm, Sanctuary	<b>Library Open</b> 9am-Noon <b>Coalition            Prepare Meal</b> 9am/Kitchen <b>Deacons Meeting</b> 7pm, Rm 301	<b>Coalition            Food Prep</b> 9am/Kitchen <b>Sort Toiletries</b> 10am/Kitchen <b>Serve the Meal</b> 4:30pm/FH-gather 5:30pm Depart	
SUNDAY 24	MONDAY 25	TUESDAY 26	WEDNESDAY 27	THURSDAY 28	 <b>FEBRUARY</b>	
<b>Worship Svc.</b> 8:15am-Chapel 10:30 am-Sanctuary <b>Sunday School</b> 9:15-10:15am <b>Library Open</b> 9:30am-Noon <b>WPPC Ringers</b> 11:35am, Sanctuary <b>Youth Group</b> 5pm, Rm 204	<b>Library Open</b> 9am-Noon <b>Tai Chi</b> 11:30am, FH	<b>Staff Meeting</b> 10:30am, Rm 301 <b>TNT</b> Class: 4:30 pm Dinner: 5:30 pm Classes: 6:30 pm <b>Children's Choir/            Youth Ensemble</b> 6:30 pm, Rm 102	<b>Worship Mtg.</b> 4pm, Rm 303 <b>WM Ringers</b> 6pm, Rm 102 <b>Chancel Choir</b> 7:15pm, Sanctuary	<b>Library Open</b> 9am-Noon <b>Session Meeting</b> 7pm, Rm 301		



If you are planning an event:

- ◆ Check with the front office to make sure the date is available on the calendar, and then confirm to make sure the date has been placed on the calendar. Inquiring about a date does not automatically hold the date.
- ◆ Complete and submit the *Publicity Request Form* located on our website <http://winppc.wpengine.com/publicity-request/>. The more information we receive about your event, the more publicity we can give it!

## UPDATE FROM THE PNC

First, thank you for the honor of letting us serve as members of your Pastor Nominating Committee. The eight of us have begun meeting weekly and understand the importance of representing the entire congregation's values, needs, and interests as we search for our next senior pastor.

The Presbyterian Church USA has adopted a well-established process that will guide our efforts. Charles M. Olsen and Ellen Morseth describe the call process this way:

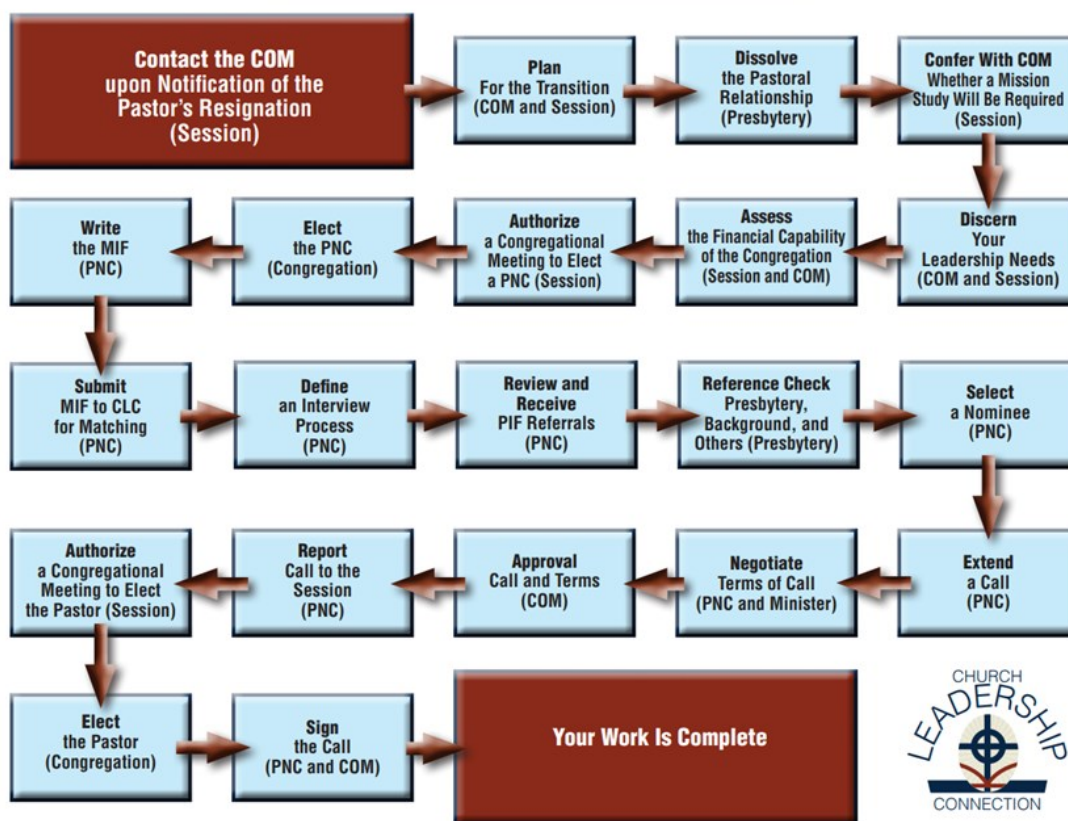
*"...the question before us could be framed thusly: 'God, whom are you selecting/calling at this time to lead in this church? Show us your choice.'*

*-- Selecting Church Leaders, The Alban Institute, 2002*

Unlike the hiring process in a secular workplace, the pastoral call process requires participating in God's own choice for the church by opening ourselves to the work of the Holy Spirit who will guide, nudge, empower, inspire, comfort and inform in our journey toward finding new pastoral leadership.

The PNC process actually includes 20 separate steps. At the present time, we are working on steps 3 through 5 as we gather information that will help us in preparing our Mission Information Form, the document that describes our church and the attributes we seek in a new pastor.

## The Call Process



We have much work before us, and we ask for your patience as well as your continued prayers of support for our efforts. We will use The Covenanter and church bulletin to keep you apprised of our progress.

An important upcoming step that all are invited to help us with is the completion of a Congregational Survey. More details on that will be shared with you in the very near future.

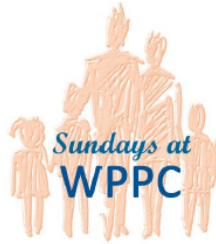
Larry Seel  
Dawn Sumrall

Steve House  
Fiona Harper

Nancy Galyean  
Nelson Roe

Jennifer Fields  
Matt Straub





### Worship Services

8:15 AM (Chapel)

10:30 AM (Sanctuary)

### Sunday School ▪ 9:15 AM

#### Children

Nursery for ages 1 month – 3 years (608)

Ages 3 years – Grade 2 (101)

Grades 3 – 5 (201)

At Winter Park Presbyterian Church we are blessed to host Sunday School classes for young and elementary aged children. Both classes use a curriculum which invites children to explore the stories of the Bible through video, crafts, games, and mission. In Sunday School they will begin to form the building blocks for a lifelong, deep faith in Christ.

#### Youth and Adults

##### Relationships in Action (301)

Relationships in Action is a Sunday School class that studies issues “with the Bible in one hand and the newspaper in the other.” Each week features a different theme and a different speaker to present each topic. They are interested in social issues that affect their lives and the lives of others and how we as followers of Christ can be a factor in positive change.

##### Seekers (315)

The Seekers is a discussion based Sunday school class that studies a wide variety of topics ranging from Books of the Bible to Theology to Current Events. They are a support group that spends time on fellowship as well as discussion and they are able to disagree, yet move in a positive direction during their discussions.

### Opportunities for Growth

#### Salt of the Earth Young Adults

3:00 pm @ Panera Bread on Aloma Ave.

Salt of the Earth is a group for 20 and 30 somethings that aim to build faith and community. Weekly discussions involve food, talking about the weekly service, our faith, work, and how we can support one another in our day to day lives. If you are a 20 or 30 something looking to engage in this community, please join us at 3:00 PM at Panera Bread on Aloma Avenue for our own time of fellowship and a treat from the bakery!

#### Youth Group

5:00 pm (204)

One of the most important aspects of growing faith in Youth is the ability to form relationships with other Christians as we learn to carry out our faith. This year, Youth Group will be doing just that! Every Sunday night, from 5:00-7:00 PM, the Youth Disciples of WPPC come together for dinner and fellowship that includes mission projects, discussions, worship, and some fun offsite events along the way. This year our discussions will revolve around relationships; those we have with each other, Christ, enemies, family, teachers, even technology!

All you need to bring is yourself and an open mind!

**R IN A Sunday School**  
**9:15—10:15 AM**  
**Room 301**



### **February 3—Spiritual Conversation Series**

Continuing with the new *Spiritual Conversation Series*, Pat Morgan will present her take on life. The *Conversation Series* invites people to share formative ideas and events which have helped shape their beliefs; in Pat's case, her experience as a religious educator. Matt Straub will guide our discussion.

### **February 10—IDignity**

Anne Taylor, *IDignity's* Development Director, will share with us how this organization is helping the disadvantaged in Central Florida overcome the difficulties of obtaining personal identification.

### **February 17— The Holy Land Revealed**

Lesson 2: The Arrival of the Israelites

Many scholars now believe that the Exodus, if it ever occurred, may have been of much smaller scale than the way it is described in the Bible and portrayed in popular media. This session will focus on the arrival of the Israelite tribes in Canaan and the establishment of their settlements. We will examine how these events are described in the Hebrew Bible and to what degree they are corroborated by archaeological evidence. Mike Galyeen will guide the discussion.

### **February 24—The Holy Land Revealed**

Lesson 3: Jerusalem—An Introduction to the City

This lesson will explore the geographical and political reasons why David chose to make Jerusalem the capital of his kingdom. The series of sieges and assaults that the ancient city endured during the time of David and Solomon will be examined. This historical review of Jerusalem down to its destruction by the Babylonians is largely based on biblical accounts. Mike Galyeen will guide the discussion.



**JANUARY 22—FEBRUARY 26**

4:30-5:30	Class
5:25-7:30	Nursery (infants to 3 yrs. old)
5:30-6:30	Dinner
6:30-7:15	Children's Choir
6:30-7:30	Classes

A brochure with detailed information can be found on the last page of this newsletter.



Join us the first Friday of every month from  
 5:30—8:30 PM • \$5/per child  
 Our next two nights out are 2/1 & 3/1

Children aged 3 and potty-trained  
 through 5th grade are invited to join!

Children will get together for games, movies,  
 pizza, and more while parents can enjoy a  
 date night or fellowship with other parents!

Reservations are required as spots are limited.

Contact the front office (407-647-1467)  
 to reserve your child's spot.

## DEACON'S DEN



When a lawyer asked Jesus, "Which commandment in the law is the greatest?" He replied, "You shall love the Lord your God with all your heart, and with all your soul, and with all your mind." He then added a second, "You shall love your neighbor as yourself." These two commandments are composed of three parts: First, you must love God with everything you are; second, you must love yourself; and third, you must give that same love to your neighbor.

And who is your neighbor?

The questioner wanted to know not just the commandment but the definition of this particular word, because he needed to know how far to take this love. Of course, Jesus answered this question two times, once immediately, with the parable of the Good Samaritan, and then when he gave the Great Commission: Go ye into all the World and preach all nations. So, our neighbor is everyone.

February is known as the month of love because we celebrate Valentine's Day. You may think this is only for sweethearts and married couples in the way of romantic love. Some may say that this is a holiday invented by the greeting card businesses and, of course, they benefit from it financially. On the other hand, we can look at it from the "love your neighbor" point of view.



You may have heard the saying "To have a friend, be a friend." Benjamin Franklin said the same thing in another way: "If you would be loved, love, and be loveable."

Both of these quotes can be interpreted the same; that you should behave in a way that reflects the friendly person you are. A positive outlook on life causes others to want to be around you.

Elbert Hubbard (1856 – 1915) was an American writer, publisher, artist, and philosopher. He founded the Roycroft artisan community in East Aurora, New York, and influenced the Arts and Crafts Movement. He described himself as a socialist who drew spiritual comparisons between several well-known writers and several major prophets of the Bible. This may not sound like the kind of person to give guidance on love, but here is what he said about this subject:

***"The love we give away is the only love we keep."***

This sums up Christ's commandment very succinctly. Another way to put it is this: Actions speak louder than words. So true. Show your love for your neighbor in any way you can. Visit someone who may be lonely. Offer to drive someone to church or the grocery store. Help someone clean their house or mow their lawn. Read to a child. Volunteer at the food pantry. Love comes from the little things.



*Pastor Reile Marrero of Santa Clara Presbyterian Church sent pictures of their nativity cantata. They wished all of us at WPPC a Merry Christmas and hopes that the God of Life will accompany us always.*





**CENTRAL FLORIDA  
HOMELESS COALITION  
2018 SUMMARY**



Approximately 50 WPPC volunteers work diligently to make sure food and supplies are ordered and prepared so the 15+ volunteers that actually transport and serve the food at the Homeless Coalition are able to do so.

Volunteers from WPPC, along with our partners from St. Marks Presbyterian, served over 3,000 individuals at the Coalition Men's Service Center this year. This includes "residents" that live there and "community" that live outside the center. On the 4<sup>th</sup> Friday of each month we provide a delicious, nutritious meal of meat/pasta dish, 7-layer salad, Panera bread, brownie, milk/lemonade, banana/orange, and milkshake. In addition, our community guests receive a PB&J sandwich to take with them and a bag of toiletries. Magazines and books are donated so all guests are offered reading materials. At appropriate times during the year we distribute Christmas cards and white Sox. This intergenerational project regularly includes students from elementary, middle and high school, in addition to adults from their 30's to their 80's.

Each month we prepare either pasta or salad for 300-350 guests, 300 brownies, 280 sandwiches and 75 toiletry bags. In the 31+ years WPPC has served the homeless, it is estimated over 110,000 meals have been served to our appreciative guests.

Presentations covering the history of the Central Florida Coalition for the Homeless and WPPC's participation in the Coalition over the past 30+ years were made to the Relationships in Action Sunday school class and to the Friendship Club.



CENTRAL FLORIDA PRESBYTERY  
2019 MISSION TRIP TO CUBA  
JANUARY 9—16, 2019



Thirty-six people, representing ten churches in the Central Florida Presbytery, spent eight busy days in Cuba. The purpose of our stay was to develop relationships with the people in the ten churches visited. Winter Park Presbyterian had six people (Melanie & Peter Rice, Reta & daughter, Kathy Peterson, Fran Morrissey & niece, Kathy Masatelli), who spent the first five nights at our partner church, Santa Clara Presbyterian. Pastor Reile (Ray-lay) Marrero and his wife of two years, Danellys (Dah-nay'-ges), provided opportunities for us to attend two Session meetings, visit in two homes of church members, attend their youth group, tour historical sites of Santa Clara, and participate in Sunday worship.

The last three nights we, along with the ten pastors and one lay person from each church, stayed at Hotel Hanabanilla in the Escambray Mountains south of Santa Clara. It was at this picturesque location that we shared the experiences we had at the various churches, evaluated them, and held two Bible studies.

In future articles we look forward to sharing more of our adventures!

CHECK OUT WHAT'S NEW  
IN YOUR WPPC LIBRARY



Stores are full of Valentine cards expressing love for another person. While we appreciate this sentiment at this time, God tells us of a love that comes from Him alone and is eternal. This is a love that is always with us.

In a wounded world, forgiveness is the name of love. For our life together, our ability to forgive each other is critical. What Christ did on the cross for us makes it possible for us to extend forgiveness to others.

In the Library we have a series of books written by various authors that begin with the same title, "Love Finds You." We have 21 books in this series that take place in different areas of the United States and Canada that describe different characters and plots, as well as family life and love.

- "Treasure Island, Florida" tells a tale about Amanda Burns who owns a bicycle shop. She's curious why a man every year rents a bicycle for two yet comes to the shop alone.
- "North Pole, Alaska" is about a former marine who returns to his home town planning to open a furniture store. But his Aunt Olive retires, leaving him a cluttered Christmas boutique with an inexperienced young woman hired to manage the store.
- "Sugarcreek, Ohio" is a story about Policewoman, Rachel Troyer who looks after her three elderly Amish aunts and their farmhouse inn, which is popular with tourists. A bearded stranger arrives begging shelter for himself and his young son.
- "Branson, Missouri" shows Ellie Heinrichs' dreams of becoming a famous Broadway actress. Instead she is cast in *The Shepherd of the Hills* locally. To get into character she translates her great-grandmother's diary, reading a tale of love and loss, wisdom and faith.
- "Prince Edward Island, Canada" is a story in the 1860's when the citizens prepare for a first visit from a member of the British Royal family. Molly Orland is too poor to be invited to the ball in honor of the young Prince of Wales, but she and other young local women are hired as extra staff in the house.

Other books in this series take you to: Martha's Vineyard, MA; Camelot, TN; Maiden, NC; Hope, KS; Carmel-by-the Sea, CA; Texas; Pennsylvania, Iowa, Oregon, Arizona, Indiana, etc. Many of these authors have published 20-30 books—some fiction and some non-fiction. All are interesting reading.



FRIENDSHIP Club  
Book Club  
HANNAH Circle  
ELIZABETH BIBLE Study  
LADIES GAME NIGHT



**Friendship Club:** Representatives from the Center for Health and Wellbeing, which is being built right around the corner, will be here to tell us about the facility and what it will have to offer the community. Please invite your friends and neighbors for this informative presentation. Lunch will be a pork roast meal and cheesecake. The cost for lunch is \$5. RESERVATIONS are NEEDED if you plan to come for lunch at 11:30 AM. The program, beginning at 12:15 PM is free. Products of the month are cereal and canned fruits/juice. Call the church office (407-647-1467) to make your reservation for the meal and transportation from the Towers and the Mayflower.

**Book Club:** The Winter Park Presbyterian Church Book Club (aka The Abibliophobes [those that are afraid of running out of reading material]) generally meets on the first Monday of each month at 7:00 PM in Room 303 of the church. The books, which include a wide variety of new fiction, classics, and non-fiction, are selected by the participants for several months in advance. Newcomers are welcome at any time to enjoy the discussion and to experience the fellowship. For more information contact Drew Byrne—[drewbyrne26@gmail.com](mailto:drewbyrne26@gmail.com).

**Hannah Circle:** The Hannah Circle meets monthly on the second Monday at 7:00 PM in room 301. Our next meeting is February 11th.

**Elizabeth Bible Study:** The Elizabeth Study Group meets monthly on the second Tuesday at 10:00 AM in the Parlor. Our next meeting is February 12th.

**Ladies Game Night:** All Winter Park Presbyterian Church women are invited to join us at our monthly game night. We usually play Hand and Foot and Bridge, but feel free to come and introduce your favorite game. We typically meet the 3rd Monday of each month, at 7:00 PM. Better yet, come at 6:00 PM and build a salad. One lady brings greens and everyone else brings a cup of something to go into the salad such as onions, beets, chopped eggs, beans, corn, cheese, or anything of your choosing. Bring your own drink and favorite salad dressing and, if you would like, a snack/munchie for later. Come alone or bring a friend! Our next Game Night is January 21st. Questions? Call Carla Gehrig at 407-678-8396.

## MOMENT of KINDNESS



We love to highlight the many ways you make our church a home by acknowledging moments of kindness—a way to inspire, grow, and connect. If you would like to share a moment of kindness please email Cindy Mitchum - [cindym@winppc.org](mailto:cindym@winppc.org).



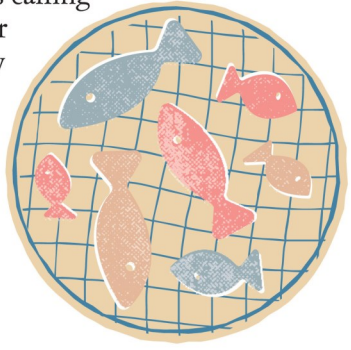
## FLOWERS for 2019



If you would like to donate flowers for the weekly worship service in honor of/in memory of someone special or of a special occasion, please pick a date and put your name on the sign-up chart located in the hallway of the front office. When you sign up, please take a form and turn it into the front office with all the information filled in. You may also complete a flower dedication form on the church website <http://winppc.org/forms/>.

# ?? Bible Quiz ??

In Luke's account of Jesus calling the first disciples from their work as fishermen to follow him and "fish for people" (NIV), which disciple is not named?



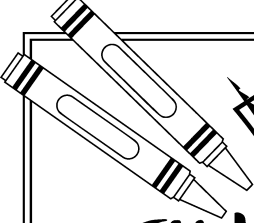
- A. James
- B. John
- C. Simon
- D. Andrew

Answer: D (See Luke 5:1-11.)



Photo Credit: Sue Rudolph

Carolyn Boyle's Sunday School kids in their cool shades!  
L-R: Jackson McCurdy, Matthew Leslie, Esther Tallungan, Carolyn Boyle, Sarah Johnson



## PUZZLE

### WITH LOVE FROM ABOVE

The Bible is full of special words from our loving God.

*Directions: Using the messages on the candy hearts, complete the Bible verses (all NIV) below.*

ALWAYS

REFUGE

LOVE

PEACE

CHRIST JESUS

STRENGTH

God is our \_\_\_\_\_ and \_\_\_\_\_,  
an ever-present help in trouble. Psalm 46:1

"Surely I am with you \_\_\_\_\_." Matthew 28:20

And the \_\_\_\_\_ of God ... will guard  
your hearts and your minds in  
\_\_\_\_\_. Philippians 4:7

Whoever lives in \_\_\_\_\_ lives in God,  
and God in them. 1 John 4:16

\_\_\_\_\_ love drives out fear. 1 John 4:18

Answer: refuge, strength, always, love, Perfect

# Puzzle!

Love is a fruit of the Spirit listed in Galatians 5:22-23. Identify another fruit that can make Valentine's Day — and every day — special. First, write a word that fits each clue below. Then unscramble the letters from the bold, vertical column to find another fruit of the Spirit. Write it on the blanks below.

**LEAVE**

**CHAPEAU**

**TRANQUILITY**

**BECOME MATURE**

**RESPOND**

**SPHERE**

**OLD TESTAMENT QUEEN**

**DISCOVER**

**CONFIDENCE**

**ALWAYS**


\_\_\_\_\_

Answer: depart, hat, peace, grow, answer, ball, Esther, find, trust, ever, gentleness



## COALITION FOR THE HOMELESS - Here's How to Help

We are delighted to be serving in the new Men's Service Center which has brought many positive changes. Now 250 "residents" are housed there; the "residents" and the folks coming in from the outside "community," are served separately. We are asking volunteer servers to please sign up on the Coalition serving list posted in the hallway near the office. Volunteers are limited to 15.

What	When
<b>Bake</b> brownies & mix PB&J (Bonnie Gaughan 407-804-2565)	Wed 2/20 9:00-11:00 AM
<b>Prepare</b> meal - (Mary Van Hook 407-359-2388)	Thurs 2/21 9:00-11:00 AM
<b>Bag</b> brownies ; make PB&J sandwiches (Eileen Silvers 407-376-2133)	Fri 2/22 9:00-10:00 AM
<b>Donate</b> unopened travel-size toiletries (soap, shampoo, antiperspirant, toothpaste, toothbrushes, disposable razors), Handi-Wipes & quart Zip-Lock bags to hold them. The folks also appreciate environmentally-friendly tote bags, and plastic grocery bags to carry toiletries and PB&J sandwiches. <b>NO CLOTHING PLEASE.</b> Contact Nancy Galyean (407-929-0903) <b>Reading Donations:</b> Magazines for men (sports, cars, National Geographic, news), religious magazines/booklets, paperback books.	<b>All month:</b> Place in <b>COALITION</b> giant storage box located in Fellowship Hall
<b>Sort and bag toiletries &amp; reading donations</b> (Marilyn Bryant 407-252-7499)	Fri 2/22 10:00-11:00 AM
<b>Prepare</b> to transport: gather supplies, load food & supplies into van (Nancy Galyean 407-929-0903)	Fri 2/22 4:30-5:15 PM
<b>Serve</b> the Meal. Please join us in the WPPC Kitchen for departure to the Coalition for the Homeless at 5:30 pm and return by 8:00 PM. Volunteers please wear closed toed shoes to the Homeless Coalition. It is a violation of the health code to wear flip-flops. Please call Nancy Galyean (407-929-0903) by the Wednesday before if you would like to serve.	Fri 2/22 5:30-8:00 PM NOTE: THE CHURCH VAN IS RESERVED FOR THIS FUNCTION.
<b>Cleanup kitchen</b> - wash, sanitize items used; store supplies (Nancy Galyean 407-929-0903)	Fri 2/22 8:00-8:30 PM
<b>Financial Donation:</b> Make check out to WPPC. Note on the memo line "Coalition for the Homeless" - mail to WPPC or bring to the church office.	<b>Any Time</b>

### HOMELESS COALITION TEAM NEEDS VOLUNTEERS

Each month about 50 devoted WPPC volunteers handle the many tasks to provide a wonderful meal and a bag of toiletries to our guests at the Coalition. We are in need of additional volunteers for various projects, and backup volunteers when regulars must be absent:

- ◆ Sort/bag toiletries at church (1 hr/mo)
- ◆ Make PB&J sandwiches (seated) at church (1 hr/mo)

If you could help out with this special mission, please call or email Nancy Galyean (info below).



**Any of the above gifts, or your time, are so appreciated!**  
To help in any way, please contact: Nancy Galyean  
407-929-0903 or nangalyean@embarqmail.com

Coalition for the Homeless of Central Florida is a Compassion Committee Ministry.





Sun	Mon	Tue	Wed	Thu	Fri	Sat
					<b>1</b> <i>Eileen Silvers</i>	<b>2</b> <i>Jane Mahoney</i>
<b>3</b>	<b>4</b>	<b>5</b> <i>Beth Danley Ivan Smith</i>	<b>6</b>	<b>7</b> <i>Jackson Buhler Cathy House Jayne Watkins</i>	<b>8</b> <i>Betty Gow Jim McKinney Jeanne Vinci</i>	<b>9</b> <i>Jan Hall Mike Yost</i>
<b>10</b> <i>Mac McIntosh Sara Van Arsdel</i>	<b>11</b>	<b>12</b>	<b>13</b> <i>Mark Beaty Vicki Hurd</i>	<b>14</b> <i>Gregory Hornbeck Sally Naylor</i>	<b>15</b> <i>Chuck Johnston Aidan Smith Jack Watkins</i>	<b>16</b> <i>Ed Matrick Judy Schmalstig</i>
<b>17</b>	<b>18</b>	<b>19</b> <i>Fiona Harper Steven Mohammed Jyme Smith</i>	<b>20</b> <i>Lenore Dillard Jane Munns</i>	<b>21</b>	<b>22</b>	<b>23</b> <i>Chris Baldwin</i>
<b>24</b>	<b>25</b>	<b>26</b>	<b>27</b>	<b>28</b> <i>Barbara Edwards Craig Uttley</i> <hr/> <b>29</b> <i>Denise Riccio</i>		



400 S. Lakemont Avenue  
Winter Park, FL 32792-4600  
407-629-0727  
[www.winppc.org/preschool](http://www.winppc.org/preschool)



In-house registration for the next school year will begin on February 4, 2019 and is on a first-come, first-served basis. Open registration will begin on Monday, February 11, 2019 at 8:30 a.m. The sooner you turn in the registration form and fee, the more likely you are to get the placement you want for your child. **Prior to registration, your current balance must be paid in full.** In order to ensure a space in the preschool you must submit the following:

- The completed Registration Form
- A \$220 non-refundable Registration Fee

#### VPK Only

- Half of the first month's tuition is due at registration and is non-refundable
- Five day VPK Plus deposit is \$104 and four day VPK Plus deposit is \$89.

**Note: Winter Park Presbyterian Preschool complies with the State of Florida Health Laws for Immunizations.** A State of Florida Certification of Immunization and School Entry Health Exam form must be completed and on file at the preschool before your child may enter in the fall. These two forms may be obtained at your doctor's office. If you would like to schedule a tour of the various classrooms, please set up a time and date with the preschool office.

*Summer Camp Brochures will be available in the preschool office and on the website beginning February 2019.*

*Summer Camp Dates: June 10-14, June 24-28, July 1-5, July 8-12, July 15-19, July 22-26*

*Summer Art Camp for up and coming VPK & Elementary Ages with Mrs. Cross*

*Dates: June 10-14, June 17-21, July 1-5, July 15-19*



Mark your calendar for Saturday, April 13 for the *Spring Fling/Silent Auction* from 11:00 AM until 2:00 PM. Winter Park Presbyterian Preschool will host a very special event that is a fund raiser and a fun-filled event that children of all ages will enjoy.

This event will include a silent auction, bounce houses, train and pony rides, make-up artist, PJ the Clown, games, theme room and many creative hands-on activities. In addition we will have a variety of food trucks.

Contact Kimberly Stuart, our PAC and *Spring Fling* chair, at [lilstuzmom@yahoo.com](mailto:lilstuzmom@yahoo.com) for further information and also to let her know how you might like to help. You can also call the preschool office at 407-629-0727. **If you are interested in joining our Parent Advisory Committee which normally meets every second Tuesday of the month at 9:30 AM in Room #301 in the church office area, we would very much appreciate your participation. The next PAC meeting is scheduled for February 12th at 9:30 AM. All are welcome!**



The Rev. Dr. Robert Eckard, Interim Pastor  
 The Rev. Emily Wasser, Associate Pastor  
 Carolyn Achenbach, Director of Operations/Accountant  
 Cindy Mitchum, Executive Assistant  
 Barbara Hordern, Administrative Assistant  
 Justin Chase, Director of Music  
 Penny Walsh, Organist  
 Tricia Wilson, Director of Preschool Programs  
 Susan Davis, Director of Handbells & Children's Music  
 Kenny Lovelace, Sexton  
 Jorge Barrios, Sunday Assistant Sexton

### SESSION

#### 2019

Will Lawrence  
 Will McCurdy  
 Rachel Myers  
 Dail Pribil  
 Doug Reece  
 Debby Tallungan

#### 2020

Doris Anguish  
 Marilyn Bryant  
 Rick Davis  
 Steve House  
 Larry Seel  
 Bob White

#### 2021

Phillip Anderson  
 Lisa Dreasher  
 Jayne Leach  
 Shaheed Mohammed  
 Peter Rice  
 Nelson Roe

### DIACONATE

#### 2019

Nancy Appich  
 Barbara Edwards  
 Bonnie Gaughan  
 Fran Morrissey  
 Cynthia Nants  
 Eileen Silvers

#### 2020

Ardyth Austin  
 Caroline James  
 Jim McKinney  
 Ellenorr Osterhaus  
 Matt Straub

#### 2021

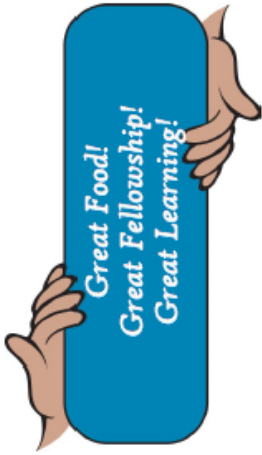
Mike Galyean  
 Julie Kent  
 Reta Jackson  
 Curtis Koon  
 Sara Van Arsdel

### MISSIONARIES

Rev. Gordon and Dorothy Gartrell - Brazil  
 Jenny Bent - Dominican Republic  
 Mark Hare - Haiti  
 Dr. Dan & Elizabeth Turk - Madagascar

For Covenanter or Sunday bulletin submissions, please fill out a publicity request online at <http://winppc.org/publicity-request/> or contact Cindy Mitchum at [cindym@winppc.org](mailto:cindym@winppc.org) or 407-647-1467.





**January 22 - February 26**

Join with other searching Christians at Winter Park Presbyterian Church for these special

**Tuesday Nights Together**

Feeding our bodies and souls with God's life-giving food.

**4:30-5:30 Class**

**5:25-7:30 Nursery - Room 608**  
(infants to 3 yrs. old)

**5:30-6:30 Dinner**

Will McCurdy & Barbara Edwards are helping to make our meals spectacular. Keep your eyes on the Sunday bulletin for the menu each week.

Adults \$6.00 Children (under 10) \$3.00  
Family Rate Total of \$15

Please RSVP for dinner by Friday noon  
407-647-1467

**6:30-7:15 Children's Choir**

**6:30-7:30 Classes**



Worship Services

8:15 am (Chapel) & 10:30 am (Sanctuary)

Sunday School

9:15—10:15 AM

Children

Nursery for ages 1 month – 3 years (room 608)  
Ages 3 years – Grade 2 (room 101)  
Grades 3 – 5 (room 201)

Youth and Adults

Relationships in Action (room 301)  
Seekers (room 315)

Opportunities for Growth

Salt of the Earth Young Adults  
3:00 pm @ Panera Bread on Aloma Ave.

Youth Group

5:00 pm (room 204)



Ash Wednesday  
March 6 ▪ 7:00 p.m.

Maundy Thursday  
April 18 ▪ 7:00 p.m.

Easter Egg Hunt  
April 20 ▪ 9:00 a.m.

Easter Sunday Services  
April 21

Sunrise & 10:30 a.m.



**Spring 2019**



**January 22 - February 26**



**Winter Park**  
PRESBYTERIAN CHURCH  
400 S. Lakemont Avenue  
Winter Park, FL 32792  
407-647-1467  
www.winppcc.org



**Differing Gifts**

Room 301  
Dr. Bob Eckard  
All of us go at life with our own personal style. In some ways we may be like other members of our family and in other ways we may be quite different. We find that we connect naturally with some people while others present more of a challenge. Understanding our basic personality type can be very helpful in our relations with others and in our personal growth. Dr. Eckard will lead this class in an exploration of the Myers-Briggs approach to understanding personality type. Come and celebrate the gifts that are yours, and expand your appreciation of the gifts of others.



We are accepting early sign-ups and pre-pay. If you would like to sign up for multiple meals at once and pay for them in advance, call the church office (407-647-1467) so arrangements can be made. Please note that meals paid for in advance are non-refundable. Adults \$6.00; Children (under 10) \$3.00; Family Rate Total of \$15



The kitchen crew is in need of support. If you are able to give time and energy to helping dinner run smoothly, please contact Will McCurdy or Barbara Edwards to find out how you can help.



Each meal includes drinks and a dessert.

- 1/22 Jumbo Chinese Takeout
- 1/29 Soup and Salad
- 2/5 Lasagna, Garden Salad & Bread Sticks
- 2/12 Barbeque
- 2/19 Athena Greek Chicken Takeout
- 2/26 Pizza and Salad



**Children's Choir—(K-grade 5)**

Room 102 (Bernard), CE Bldg. Susan Davis  
Music is one of the most expressive and beautiful ways that children can worship God! It is always a joy to hear our Children's Choir sing during selected Sunday morning church services as they share their glorious gifts and unique charm with all of us. Children's Choir meets every Tuesday Night from 6:30-7:15 pm in the music room and is open to all children in kindergarten and older. Youth serve as helpers before their own 7:15 pm rehearsal.



**Six Themes From Matthew**

**Everyone Should Know**

Room 317 Rene Cuthill  
Rather than a chapter by chapter study, this will look at some major themes to be found in Matthew which are helpful to our understanding and personal faith development. This book is one of a series of Six Themes volumes based on different Bible books recently put out by the PCUSA. All are welcome. Preparation each week will involve only a small amount of reading.

**Creeds**

Room 315 Terry Irwin  
This class will examine the place of Creeds and Confessions in the Reformed Churches (PCUSA in particular). It will look at selected Creeds and Confessions from the Book of Order to put them in historical perspective and to explore their significance to our lives today.

