



# The Covenanter

May 2025



Winter Park  
PRESBYTERIAN CHURCH



Worship Services: 8:15 & 10:30 AM | Sunday School: 9:15 AM  
400 S. Lakemont Avenue | Winter Park, FL 32792 | 407-647-1467 | [www.winppc.org](http://www.winppc.org)  
Newsletter Submissions: [cindym@winppc.org](mailto:cindym@winppc.org)





				THURSDAY 1	FRIDAY 2	SATURDAY 3
				<b>Coalition</b> Prepare Meal 9:30am/Kitchen <b>Neighbors &amp; Friends Outing</b> 11:30am, Meet at City Barbeque, WVP	<b>Coalition Food Prep</b> 9am/Kitchen <b>Tai Chi</b> 11:30am, FH <b>Serve the Meal</b> 3:30pm/FH-gather 4:00pm/Depart	
SUNDAY 4	MONDAY 5	TUESDAY 6	WEDNESDAY 7	THURSDAY 8	FRIDAY 9	SATURDAY 10
<b>Communion Worship Service</b> 8:15am-Chapel 10:30am-Sanctuary <b>Sunday School</b> 9:15-10:15am <b>Children's Church</b> 10:30am	<b>Tai Chi</b> 11:30am, FH	<b>Scout Troops Mtg</b> 7pm, Rms 202/204 <b>Pack 246 Mtg</b> 7pm, FH	<b>WPPC Handbells</b> 6pm, Rm 102 <b>Chancel Choir</b> 7:15pm, Sanctuary		<b>Tai Chi</b> 11:30am, FH <b>Kid's Night Out</b> 5pm, FH	
SUNDAY 11	MONDAY 12	TUESDAY 13	WEDNESDAY 14	THURSDAY 15	FRIDAY 16	SATURDAY 17
<b>Mother's Day Worship Services</b> 8:15am-Chapel 10:30am-Sanctuary <b>Sunday School</b> 9:15-10:15am <b>Children's Church</b> 10:30am	<b>Tai Chi</b> 11:30am, FH <b>Hannah Circle</b> 6pm, Rm 301	<b>Young at Heart</b> 2:30pm, Sanctuary <b>Scout Troops Mtg</b> 7pm, Rms 202/204 <b>Pack 246 Mtg</b> 7pm, FH	<b>PS Board Meeting</b> 10am, Rm 301 <b>WPPC Handbells</b> 6pm, Rm 102 <b>Chancel Choir</b> 7:15pm, Sanctuary	<b>Neighbors &amp; Friends</b> 11:30am, FH	<b>Tai Chi</b> 11:30am, FH <b>Wedding Rehearsal</b> 4:30pm, Sanctuary <b>WPPP Annual Art Show &amp; Auction</b> 5pm, FH	<b>Wedding</b> 11am, Sanctuary
SUNDAY 18	MONDAY 19	TUESDAY 20	WEDNESDAY 21	THURSDAY 22	FRIDAY 23	SATURDAY 24
<b>Graduation Sun. Worship Services</b> 8:15am-Chapel 10:30am-Sanctuary <b>Sunday School</b> 9:15-10:15am <b>Children's Church</b> 10:30am <b>Deacons Mtg</b> 11:45am, Rm 301	<b>Tai Chi</b> 11:30am, FH	<b>Scout Troops Mtg</b> 7pm, Rms 202/204 <b>Pack 246 Mtg</b> 7pm, FH	<b>WPPC Handbells</b> 6pm, Rm 102 <b>Chancel Choir</b> 7:15pm, Sanctuary	<b>COM Mtg</b> 6pm, Rm 301 <b>Session Mtg</b> 7pm, Rm 301	<b>Tai Chi</b> 11:30am, FH	
SUNDAY 25	MONDAY 26	TUESDAY 27	WEDNESDAY 28	THURSDAY 29	FRIDAY 30	SATURDAY 31
<b>Worship Services</b> 8:15am-Chapel 10:30am-Sanctuary <b>Sunday School</b> 9:15-10:15am <b>Children's Church</b> 10:30am	<b>Office Closed</b> 	<b>Scout Troops Mtg</b> 7pm, Rms 202/204 <b>Pack 246 Mtg</b> 7pm, FH	<b>WPPC Handbells</b> 6pm, Rm 102 <b>Chancel Choir</b> 7:15pm, Sanctuary		<b>Tai Chi</b> 11:30am, FH	







## NEIGHBORS & FRIENDS

**THURSDAY, MAY 15**  
**11:30AM IN FELLOWSHIP HALL**

Join us for a fun, hands on creative experience! Our guest, Emily Bader, will lead us in making "Cheer Mugs." Please bring a plain coffee mug and a pair of scissors or clippers. All other supplies, including the flowers, greenery, and oasis will be provided. You will leave the gathering with a cheerful flower arrangement in a mug. The cheer mug is meant to be passed to a friend or someone who many need some cheer.

We will gather at 11:30am for a Chef Scott catered lunch at the cost of \$15. Please make your reservation by Monday, May 12. Call the church office at 407-647-1467 or sign up on the list located on the bulletin board in the front office hallway.

As always, you are welcome to join us around the table with your own lunch or come just for the program at 12:15pm.

Bring a neighbor or friend as we gather to arrange lovely flowers into a Cheer Mug to brighten the day for someone.

We hope to see you there!



*Let's remember those less fortunate than we are by bringing a breakfast item to give to our local food pantry.*



**Winter Park**  
PRESBYTERIAN CHURCH

400 S. Lakemont Ave., Winter Park, FL 32792 | 407-647-1467



WINTER PARK  
PRESBYTERIAN PRESCHOOL  
PRESENTS

# THE GLOW GARDEN

ART SHOW & AUCTION

FRIDAY MAY 16, 2025 5:00PM-8:00PM

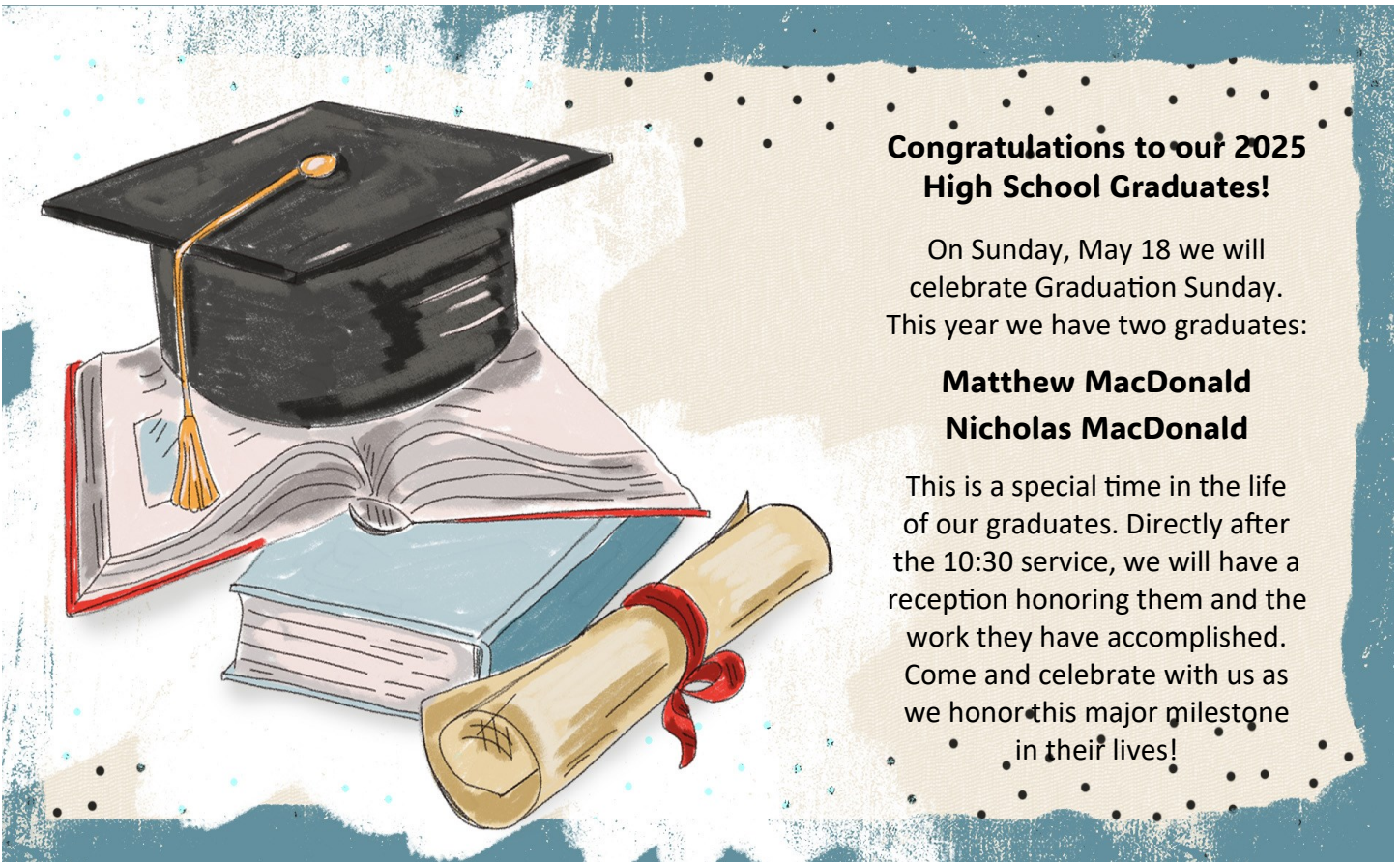
Online Auction goes live on Thursday

May 15th at 2:30PM

ONLINE AUCTION, CONCESSION STAND,  
INTERACTIVE ART DISPLAY, & FOOD TRUCKS

All proceeds go towards our Arts Programs





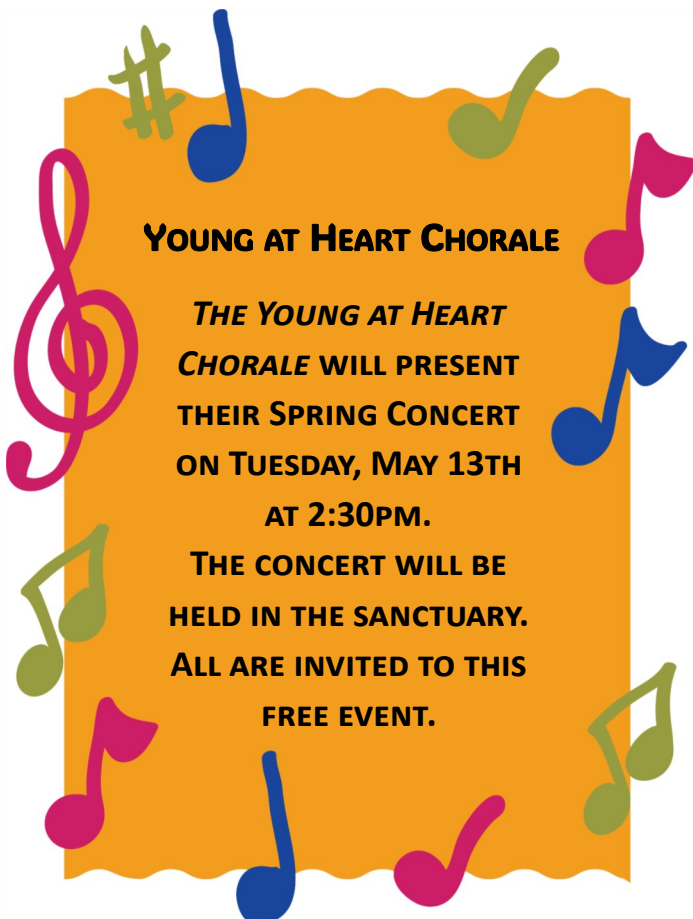
## **Congratulations to our 2025 High School Graduates!**

On Sunday, May 18 we will  
celebrate Graduation Sunday.  
This year we have two graduates:

**Matthew MacDonald**

**Nicholas MacDonald**

This is a special time in the life  
of our graduates. Directly after  
the 10:30 service, we will have a  
reception honoring them and the  
work they have accomplished.  
Come and celebrate with us as  
we honor this major milestone  
in their lives!



## **YOUNG AT HEART CHORALE**

*THE YOUNG AT HEART  
CHORALE* WILL PRESENT  
THEIR SPRING CONCERT  
ON TUESDAY, MAY 13TH  
AT 2:30PM.

THE CONCERT WILL BE  
HELD IN THE SANCTUARY.  
ALL ARE INVITED TO THIS  
FREE EVENT.



PLEASE NOTE THAT JUNE & JULY  
WILL BE COMBINED INTO ONE  
SUMMER EDITION. IF YOU HAVE  
ANYTHING TO SUBMIT FOR THE  
SUMMER EDITION, PLEASE SEND  
YOUR SUBMISSIONS BY MAY 15TH  
TO [CINDYM@WINPPC.ORG](mailto:CINDYM@WINPPC.ORG).



## SPECIAL OFFERING—CARING FOR GENERATIONS | SUNDAY, MAY 11

For more than 50 years Florida Presbyterian Homes and Westminster Communities of Florida have been connected to the church through a covenant agreement, first with the Synod of Florida and then with the Synod of South Atlantic. Due to generous contributions by Presbyterian congregations, residents at Florida Presbyterian Homes and Westminster Communities of Florida can count on the Benevolent Assistance program for support. This safety net assures residents that they will continue to remain in their homes and get the care they need, even though they have outlived their financial resources. They can experience an increased lifespan due to better health and medical care. Higher costs of healthcare, prescriptions, and the economy have presented a whole new set of concerns which could be overwhelming without assistance from those who are more fortunate.

Jesus reminds us in Matthew 25:40:

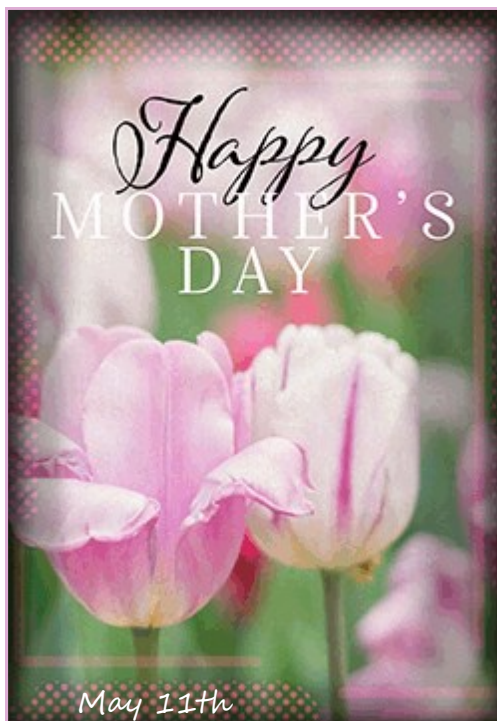
“As you did to one of the least of My brethren, you did to Me.”

WPPC will gratefully accept your special offering on Mother’s Day, May 11th. All the donations received will be sent to Westminster Retirement Communities Foundation.

## GENTLENESS

In the wake of changes in our church, we need to keep in mind that God is in charge. As brothers and sisters in the Lord, it is vital to remember what has brought us together and should keep us together in years to come. Our mental health is dependent upon our relationships with each other, and we cannot allow anything to destroy our sense of community.

We are programmed to seek and to display extravagant over-reaction to changes in our modern world. But gentleness is the moderating grace amid chaos and conflict, and is vital to bringing God's peace to our struggles. How can we be gentle? How can we restrain from over-reacting to the wounds, offenses, and slights that come our way? The Lord is our vindication. He is our example. He is our comfort, our hope and our strength. We need to seek God to be our point of character and gentleness in the middle of the chaos and conflict around us. We need to ask that God’s presence be made known and that our character reflects that presence in all that we do and say, especially with gentleness. We are all here because of our love of God and one other, the foundation of our mental health. ~Wendy Stafford





## Deacons' Den

Debbie Pauzar

Each one of us is called to love and care for others, to live out our faith obeying Jesus who instructed us to love one another. Though we are officially elected to be Deacons, you also have a heart like Christ, a Deacons' heart, when you love others. This love sets all of us apart as the children of God.

The Deacons are called to pray, call, email, text, send cards, visit those in need and perform acts of kindness. We distribute the altar flowers after church on Sunday. We provide gift baskets for parents of new babies and ensure care notes and booklets are displayed and available. And we participate in serving Communion and providing memorial receptions for grieving families.

The memorial receptions involve planning, securing needed items, using creative talents and communicating with the grieving family to meet their needs. We work to prepare days in advance and clean up afterwards.

We are a small group of dedicated Christians who love the Lord and our church family. *But we could not do our job without your encouragement and support, especially those who volunteer to serve beside us at memorial receptions. You are a gift from God, serving Him as you serve those in great need.*

Most of us have lost loved ones, have experienced the pain of grief and therefore understand how hard memorial services can be. Romans 12:15 tells us to *rejoice with those who rejoice and mourn with those who mourn*. Here is our opportunity to obey the Lord as we offer loving hearts of *comfort and support for those grieving the loss of their loved ones*.

*I am always amazed how grief intertwines with a celebration of joy at our church's memorial services. There are tears, but there are also sweet memories full of smiles. There is an emptiness, a deep longing for their loved one to still be here, yet there is also the loving Presence of the Lord and those they love who are still here.*

So, whether we rejoice or mourn,

it is His Love for us and our Love for Him,

*a Love so Powerful*

it fills our hearts with both joy & compassionate empathy which sees us through even the pain of loss

*because we know the TRUTH*

the CERTAINTY,

the HOPE,

this JOY of GRACE...

THAT ETERNAL LIFE BEGINS  
WITH OUR LAST BREATH.

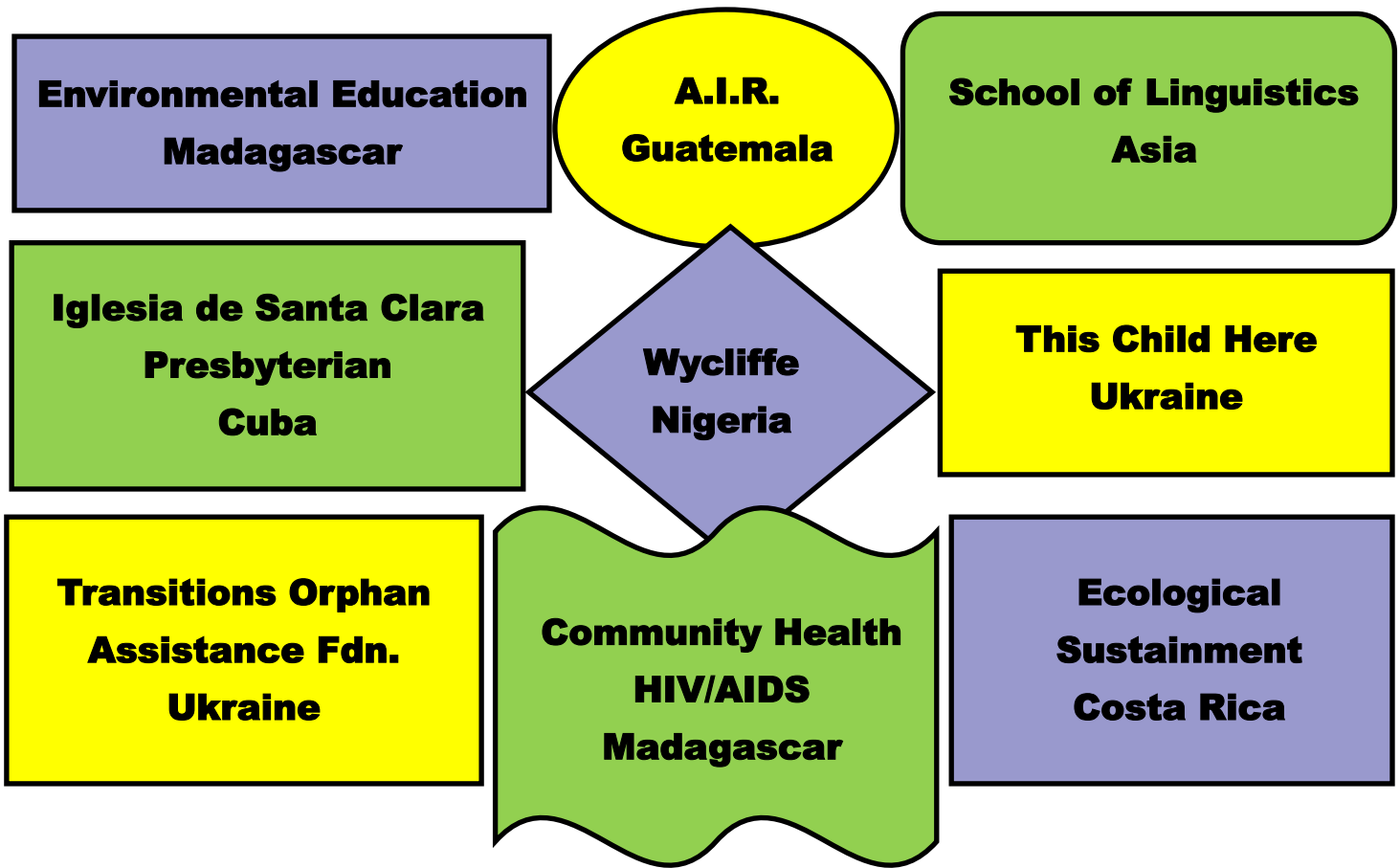
Child of Grace

Welcome



to  
&  
me





WPPC supports nine International Missions through the Compassion Committee. They are listed on the back of the Sunday bulletin each week.

If you would like to learn more about these missions...

- ♦ Where they are located
- ♦ Who they serve
- ♦ What they actually do
- ♦ How they are selected
- ♦ How much they receive

...please join us in Room 301 at 9:15 on May 4th.





## COALITION FOR THE HOMELESS OF CENTRAL FLORIDA

### -Here's How to Help

Winter Park Presbyterian Church has been involved in a feeding ministry even before the Central Florida Coalition for the Homeless was created in 1987. We serve on the 1st Friday of each month.

If you would like to donate your time to prepare the food during the week before the 1st Friday, please review the information below and contact the Team Leader listed. If you would like to serve,

What	When
<b>Bake</b> brownies / Anna Caparis 707-889-4768	Wed 4/30 9:00-11:00 AM
<b>Prepare</b> meal / Anna Caparis 707-889-4768	Thurs 5/1 9:30-11:30 AM
<b>Bag</b> brownies / Wendy Jamison 407-739-7858	Fri 5/2 9:00-10:00 AM
<b>Donate</b> reading materials: Magazines for men, women, & children (news, cars, sports, National Geographic, religious magazines/booklets, paperback books)	<b>All month:</b> Place in <b>COALITION</b> giant storage box in Fellowship Hall.
<b>Prepare</b> to transport: Gather supplies, load food & supplies into bus Anna Caparis 707-889-4768	Fri 5/2 3:30-4:00 PM
<b>Serve</b> the Meal. Join us in the WPPC kitchen for departure to Coalition at 4:00PM and return by 7:00PM. Volunteers please wear closed-toed shoes; it is a violation of health code to wear flip-flops. Please sign up in office hallway <u>and</u> call Anna Caparis (707-889-4768) by the Wednesday before if you would like to serve. The Coalition requires each volunteer to register.	Fri 5/2 4:00-7:00 PM <b>NOTE:</b> The church bus is reserved for this function.
<b>Cleanup kitchen:</b> Wash, sanitize items used; store supplies	Fri 5/2 7:00-7:30 PM
<b>Financial Donation:</b> Make check out to WPPC; note on the memo line "Coalition for the Homeless" - mail to WPPC or bring to the church office.	<b>Anytime</b>

### HOMELESS COALITION TEAM NEEDS VOLUNTEERS

Each month about 40 devoted WPPC volunteers handle the many tasks to provide and serve a wonderful meal to our guests at the Coalition.

We are in need of additional volunteers for various projects, and backup volunteers when regulars must be absent.

**Any of the above gifts, or your time, are so appreciated!**

**To help in any way, please contact: Anna Caparis  
707-889-4768 or [annafromal@yahoo.com](mailto:annafromal@yahoo.com)**

Coalition for the Homeless of Central Florida is a Compassion Committee Ministry.





# KID'S NIGHT OUT

**END OF THE SCHOOL YEAR  
FUN EXTRAVAGANZA!**



**FRIDAY, MAY 9TH, 2025  
5:00 PM - 8:00 PM**

**AGES 4 MONTHS - 11 YEARS OLD**

**\$20 PER CHILD**

**DINNER AND SNACK WILL BE PROVIDED!**



**Winter Park**  
PRESBYTERIAN CHURCH  
**400 S. LAKEMONT AVE  
WINTER PARK, FL 32792**





# KID'S NIGHT OUT

## REGISTRATION

**PLEASE SUBMIT PAYMENT WITH YOUR REGISTRATION.  
PAYMENT NEEDS TO BE MADE BY CHECK OR CASH. NO ONLINE  
PAYMENT OPTION IS AVAILABLE.**

**CHILD'S NAME:** \_\_\_\_\_

**AGE:** \_\_\_\_\_

**ALLERGIES:** \_\_\_\_\_



**CHILD'S NAME:** \_\_\_\_\_

**AGE:** \_\_\_\_\_

**ALLERGIES:** \_\_\_\_\_

**CHILD'S NAME:** \_\_\_\_\_

**AGE:** \_\_\_\_\_

**ALLERGIES:** \_\_\_\_\_



**PARENT'S NAME:** \_\_\_\_\_

**E-MAIL:** \_\_\_\_\_

**CONTACT PHONE:** \_\_\_\_\_

**EMERGENCY NUMBER:** \_\_\_\_\_



# ?? Bible Quiz ??

What was the name of the wealthy merchant of purple cloth who met Paul and his companions, was baptized and became a leader in the Philippian church?

- A. Priscilla
- B. Lydia
- C. Dorcas
- D. Joanna



Answer: B (See Acts 16:11-15, 40.)



## A NOBLE EXAMPLE

Proverbs 31 describes a God-honoring woman. How are the women in your life like her? How can you follow their example?

Directions: Use the word bank to complete all the Bible verses. Then write the circled letters in order below to complete Proverbs 31:30, NIV.



### WORD BANK

bread, household, women, laugh, children, clothed, speaks, husband, tongue



She is \_\_\_\_\_ with strength and dignity; she can \_\_\_\_\_ at the days to come.

She \_\_\_\_\_ with wisdom, and faithful instruction is on her \_\_\_\_\_.

She watches over the affairs of her \_\_\_\_\_ and does not eat the \_\_\_\_\_ of idleness.

Her \_\_\_\_\_ arise and call her blessed; her \_\_\_\_\_ also, and he praises her:

"Many \_\_\_\_\_ do noble things, but you surpass them all." Proverbs 31:25-29, NIV

Charm is \_\_\_\_\_eptive, and be\_\_\_\_\_ty is fl\_\_\_\_\_eting; but a woma\_\_\_\_\_ w\_\_\_\_\_o f\_\_\_\_\_rs the Lo\_\_\_\_\_d is to be prais\_\_\_\_\_d.

Proverbs 31:30, NIV

# Puzzle!

Unscramble the names of these biblical mothers. Look up the verse if you need help. Then use the letters on the numbered blanks to complete the message below.

VEE (Genesis 3:20)

6 11

NNAAH (1 Samuel 1:20)

14

RBAHEOD (Judges 5:7)

18 3

KREEHAB (Genesis 27:5)

16 5

EHLA (Genesis 30:14)

1

CLEHRA (Genesis 30:22)

7 12

MOIAN (Ruth 1:22)

10 17 13

RAAHS (Genesis 17:19)

8

AMYR (Matthew 2:11)

2

ZEBLEHATI (Luke 1:13)

9 15 4

1 2 3 4 5 6 7 8 9 10 11 12  
G F F G  
13 8 14 15 4 16 10 17 3 18

Answers: Eve, Hannah, Deborah, Rebekah, Leah, Rachel, Naomi, Sarah, Mary, Elizabeth: A mother's love is a gift from God!  
Answers: clothed, laugh, speaks, tongue, household, bread, children, husband, women, Charm is deceptive, and beauty is fleeting; but a woman who fears the Lord is to be praised. Proverbs 31:30, NIV

Answers: Eve, Hannah, Deborah, Rebekah, Leah, Rachel, Naomi, Sarah, Mary, Elizabeth: A mother's love is a gift from God!



# PRESCHOOL NEWS



## MAY 2025

What an incredible journey we've had this year!

To the Preschool's cherished families, we extend our deepest gratitude for entrusting us with the care and education of your precious children. The children have flourished in ways that never cease to amaze us. Each day, they demonstrate remarkable resilience, curiosity, and compassion as they navigate the world around them. From forging new friendships to mastering new skills, and learning about the word while also building a relationship with God.

As we conclude this school year, we congratulate all the 2024-2025 graduating students for all of their dedication and are honored that they selected our school as a stepping stone towards their foundation in their future endeavors.



## Upcoming Events

- May 5-9: Teacher Appreciation Week
- May 12: Muffins with Mom
- May 15-16: Annual Art Show
- May 22: VPK Graduation
- May 26: Memorial Day/No School
- May 28: Last Day of School

## Registration

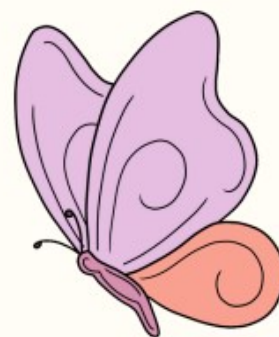
We are accepting registration for our 2025-2026 school. To inquire for more information please visit [www.winppc.org](http://www.winppc.org) or call 407-629-0727

The Lord bless us, and keep us.  
The Lord make his face to shine upon us, and be gracious unto us. The Lord lift up his countenance upon us, peace both now and evermore.  
Amen

We pray you enjoy your summer  
with your family and friends!









**5/1**

**Nancy Appich  
Shaheed Mohammed  
Marna Williams**

**5/2**

**Marianna LaRue  
Lori Pantoliano**

**5/3**

**Mary Ferguson**

**5/4**

**Lee Corbett  
Dave Rea**

**5/6**

**Greg Brown  
Jason Mahoney**

**5/8**

**Norlin Ham**

**5/9**

**Dan Kittinger**

**5/10**

**Susan Davis  
Lindsay Seel  
Woody Storey**

**5/11**

**Jodi Tassos**

**5/15**

**Beverly Salmon  
Bethanne Seel**

**5/17**

**Almeda Dean**

**5/19**

**Fred Murray  
Dennis Salmon**

**5/22**

**Joann Robertson**

**5/25**

**Beverly Carpenter**

**5/26**

**Ryan Yadav**

**5/28**

**Crystal Fern**

**5/29**

**Alan Davis**

**5/31**

**Stephen Boyle  
Sue Howard  
Margie Meliza**

**6/2**

**Matt Straub**

**6/6**

**Frances Swope**

**6/7**

**Barbara dePaula**

**6/9**

**Steve House  
Carolyn Wolf**

**6/10**

**Theresa Coker**

**6/11**

**Janet Barnes**

**6/14**

**Bill Duncan**

**6/16**

**Mary St. John**

**6/17**

**Nancy Glancy**

**6/21**

**Fern Barnard**

**6/22**

**Enid Marr**

**6/24**

**Richard Ferguson**

**6/25**

**Patrick Boyle**

**6/27**

**Dan Meadors  
Sue Rudolph**

**6/28**

**Marsha Johnson  
Gary Wolf  
Tom Woodward**

**6/29**

**Denise Ferguson**

**6/30**

**Mitch Bargar**





The Rev. Dr. James A. Capps, Adult Ministry Coordinator  
 Justin Chase, Director of Music  
 Penny Walsh, Organist  
 Sandra Shafer, Pianist  
 Scott Beck, Director of Handbells  
 Carolyn Achenbach, Director of Operations/Accountant  
 Cindy Mitchum, Executive Assistant  
 Barbara Hordern, Administrative Assistant  
 Valerie Beltrán, Children's Ministry Coordinator  
 Adam Davies, Sexton  
 Nicole Fye, Director of Preschool Programs  
 Rosaura Velazques, Assistant Director of Preschool Programs  
 Katie Daniels, Preschool Administrative Assistant

### SESSION

#### 2025

Theresa Coker  
 Mary Ferguson  
 Cathy House  
 Glenn Riccio  
 Ron Thompson

#### 2026

Syd Davis  
 Betty Johnston  
 Shaheed Mohammed  
 Nelson Roe

#### 2027

Maria Garton  
 Brandon St. John  
 Carel Thompson  
 Phyllis Woods

### DIACONATE

#### 2025

Meg Baldwin  
 Anna Caparis  
 Lynne McKnight  
 Debbie Pauzar  
 Deborah Roberts  
 Paula Smathers

#### 2026

Ernestine Beattie  
 Sue Howard

#### 2027

Cynthia Nants  
 Robert Nevill

### MISSIONARIES

Mark Hare & Jenny Bent - Costa Rica  
 Dr. Dan & Elizabeth Turk - Madagascar

For Covenanter or Sunday bulletin submissions, please fill out a publicity request online at <http://winppc.org/publicity-request/> or contact Cindy Mitchum at [cindym@winppc.org](mailto:cindym@winppc.org) or 407-647-1467.